



MIDLAND CREDIT UNION

NEWS & UPDATES

February 2025 e-Lert



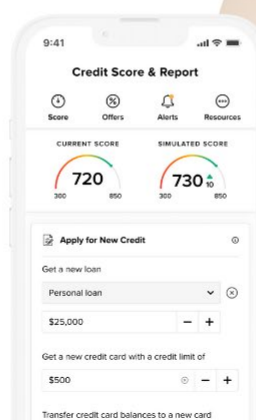
REDIRECTING SERVICES TO BONDURANT

Friday, February 28, 2025, the Pleasant Hill Midland Credit Union branch will close and its member services will relocate to the Bondurant Smart Branch.

We're excited to announce that in early March the Bondurant Smart Branch will begin offering Teller Services!

CREDIT SCORE SIMULATOR

YOUR BLUEPRINT
TO SUCCESS



Get Your Blueprint To Success!

Making informed financial decisions is key to building a strong credit profile. With our NEW SavvyMoney-Credit Score Simulator, you can see how paying off a credit score, taking out a loan, or increasing your limit affects your score before you make a move.

Why Use the SavvyMoney-Credit Score Simulator?

- Understand how your financial choices impact your credit score
- Plan ahead for major financial decisions with confidence
- Take control of your credit and work toward your financial goals

Whether you're improving your score or planning for a big purchase, the SavvyMoney-Credit Score Simulator gives you the insights you need to make smarter credit decisions.

[Get YOUR Blueprint To Success today!](#)



Board of Director Nominations

NOW OPEN

If you're interested in learning more, please ask us for details.
Applications will be accepted until **2/26/25**.

Nominations are now open for our Board of Directors!

Be sure to reach out to us by 2/26 for application details.

[Details & Application](#)

CONQUER *your* DEBT



Transfer your high-rate credit card balances to a Midland Mastercard at **7.99% APR*** for 12 months!

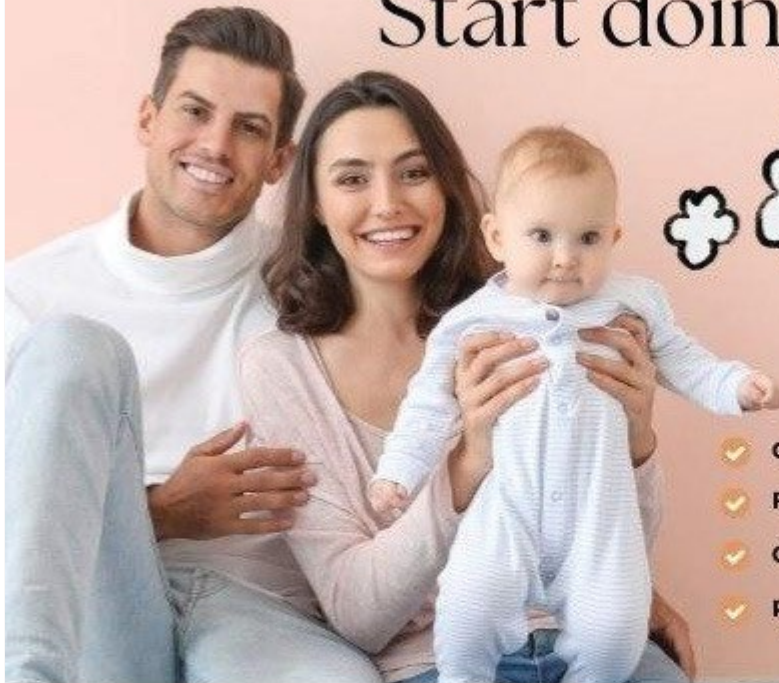
Save money on interest with our low promotional rate for 12 months on balance transfers posted on or between January 2, 2025, and March 31, 2025, on new or existing card accounts.

[Learn More](#)

* Special reduced annual percentage rate (APR) is valid on qualifying balance transfers posted on or between January 2, 2025 and March 31, 2025. Promotional rate is good for 12 months from the first qualifying transaction post date, after which the promotional interest rate will return to the individual cardholder's standard rate at the completion of the offer cycle. The APR is not valid on purchases or cash advances. See your credit card statement for further details. All loans are subject to approval. Some restrictions may apply.

Stop Dreaming

Start doing!



- ✓ Competitive Rates
- ✓ First-Time Home Buyer Options
- ✓ Conventional, FHA, VA, USDA
- ✓ Personalized Service

WHAT ARE YOU WAITING FOR?

Now is the time to buy your dream home!

Learn more.

🏠 ✨ Dreaming of a new home? Make it happen in the New Year! With competitive rates, personalized support, and flexible options, now is the time to turn your dream into a reality. Contact us today for a free pre-approval or rent vs own analysis.

Call **515-867-2728!**

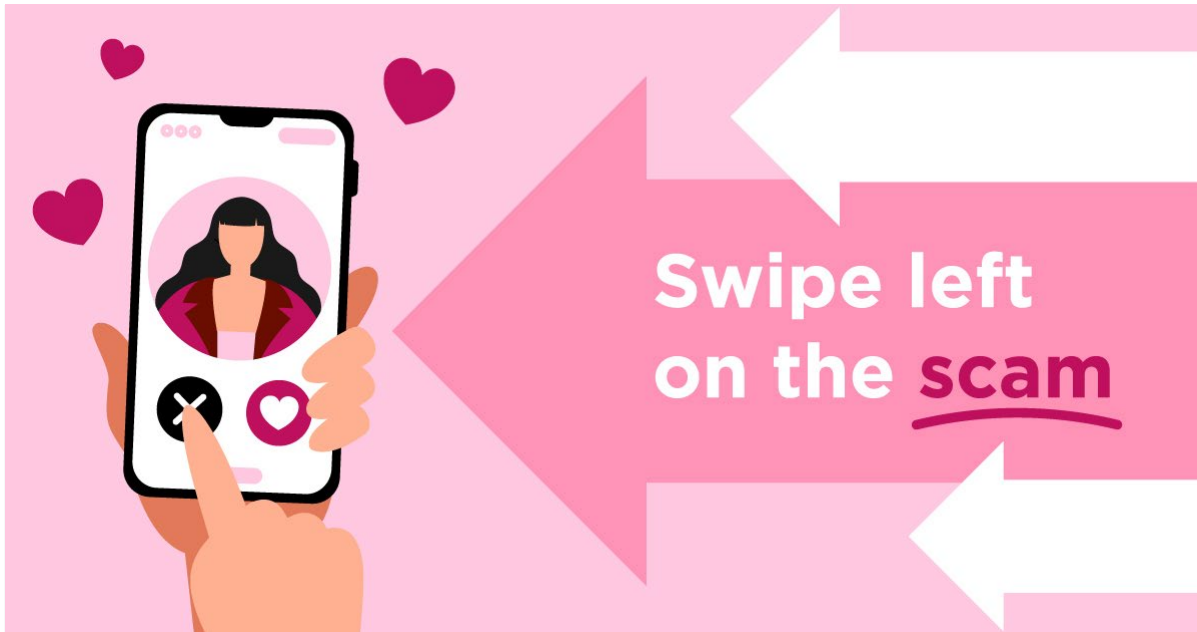
[Learn More](#)

I didn't
KNOW
MIDLAND

**offers NO TRANSFER
FEES when you transfer
your high-rate credit card
balances to a Midland
Mastercard!**



[Learn More](#)



Romance Scams

If someone contacts you on social media or a dating website and appears interested in knowing you, stop! You may be the target of a romance scam. Scammers utilize numerous tactics, including impersonating that special someone, with the result of you sending them money.

A promotional banner for the 'Light Your Way Rewards' program. The background is a dark, starry night sky with a glowing aurora borealis in shades of green and blue. In the center, a person is silhouetted against the light, standing on a rocky outcrop. The text 'LIGHT YOUR WAY REWARDS' is prominently displayed at the top in large, white, stylized letters. Below it, the main headline reads 'Use your debit card and step into the extraordinary.' in white. Further down, smaller text states: 'Each time you use your debit card to make purchases between Jan. 1- Mar. 31, 2025, you'll automatically be entered for a chance to win!' and 'Don't have a debit card? Apply today!'. At the bottom, the SHAZAM logo is on the left and the MIDLAND CREDIT UNION logo is on the right.

**LIGHT
YOUR WAY** REWARDS

Use your debit card and
step into the extraordinary.

Each time you use your debit card to make purchases between
Jan. 1- Mar. 31, 2025, you'll automatically be entered for a chance to win!

Don't have a debit card? **Apply today!**

SHAZAM MIDLAND CREDIT UNION

Each time you use your Midland Debit Card for a PIN or signature-based purchases through March 31, 2025, you'll automatically be entered for a chance to win great prizes!

Grand Prize: \$500 SHAZAM gift card

8 Monthly Winners: \$50 SHAZAM gift card

If you need a Midland Debit Card, please [send us a message](#), give us a [call](#), or [stop in](#).

*No purchase is necessary to enter to win. A purchase will not increase your chances of winning. Void where prohibited. The promotion period is between January 1, 2025 through March 31, 2025. Visit <https://www.shazam.net/services/marketing/sdr-rules> for official rules and complete contest details. All rights reserved.

Don't miss the
Virtual Annual Meeting
of *your* credit union.



Wednesday, April 23rd
5:00-5:15 | ONLINE

Save the date for the Virtual Annual Meeting on Wednesday, April 23rd at 5:00pm!

[Details](#)

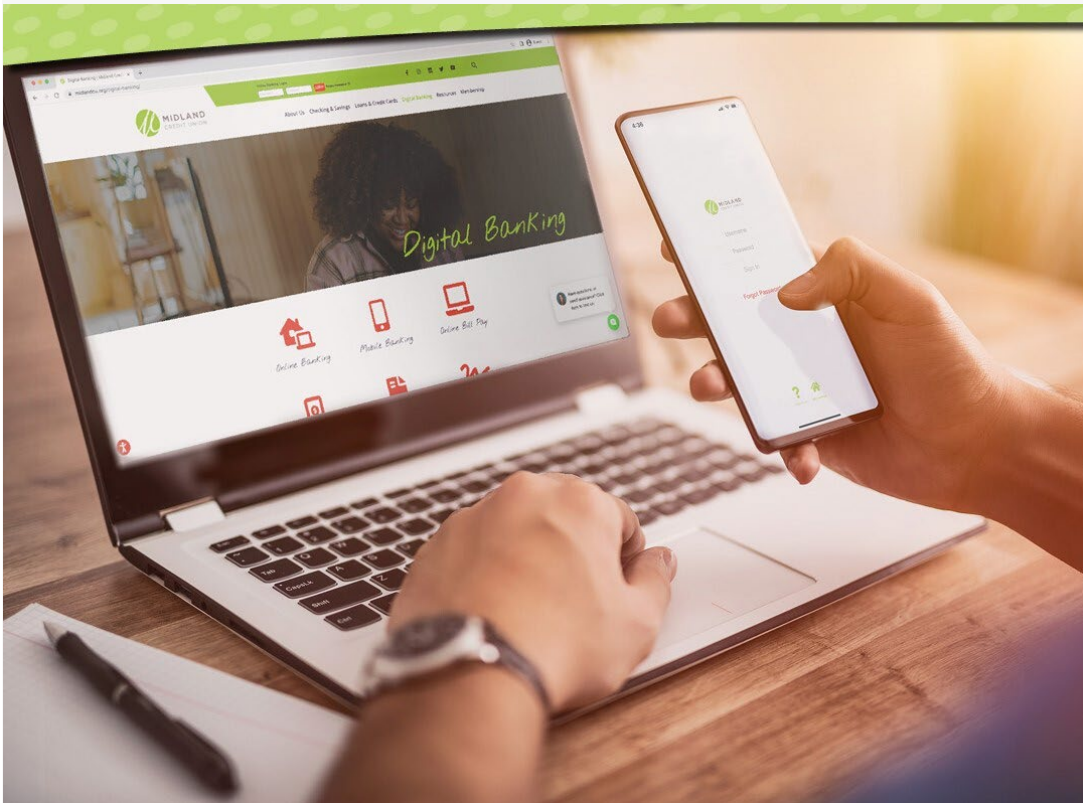




Google Review

"So far so good! A great host of new product I didn't have before. Keep up the good work Midland!"

Jeffery Awe



All Midland Credit Union locations will be **closed**

for the upcoming holiday:

Closed **Monday, February 17th** in observance of **Presidents Day**.

Remember: with [DIGITAL BANKING](#),

we're never really closed!



Love your credit union?

Tell others what you love about Midland Credit Union!

Click below to leave a Google Review!

- [Urbandale](#)
- [Pleasant Hill](#)

- [Bondurant](#)
- [Council Bluffs](#)

[Checking & Savings](#) | [Loans & Credit Cards](#) | [Digital Banking](#)
[Resources](#) | [Membership](#) | [Apply Online](#) | [About Us](#)

Urbandale Headquarters - 2891 106th St., Urbandale

Pleasant Hill Branch - 1225 Copper Creek Dr. Suite M, Pleasant Hill

Bondurant Smart Branch - 3007 Oxbow Court SW, Bondurant

Council Bluffs Branch - 1900 W Broadway, Council Bluffs

Main: 515-278-1994 Loan: 515-645-9334 Toll Free: 1-800-747-1994

www.MidlandCU.org





*2891 106th Street
Urbandale, IA 50322*