



NEWS & UPDATES

September 2023 e-Lert



Midland Credit Union is
Invested in *Your Hometown*
& proudly serving hometowns in the 24 counties!

Welcome NGPL Employees Credit Union!

Midland Credit Union is pleased to announce that we have expanded our field of membership through a merger with NGPL Employees Credit Union. We want to welcome all NGPL member-owners to the Midland Credit Union family! Midland Credit Union now serves 24 counties in Iowa. If you have family or friends who live or work in one of these 24 counties, we

encourage you to invite them to join the MCU family. Due to the merger, NGPL Employees Credit Union members and their families living or working outside these 24 counties are ALSO ELIGIBLE to become part of the Midland Credit Union family.

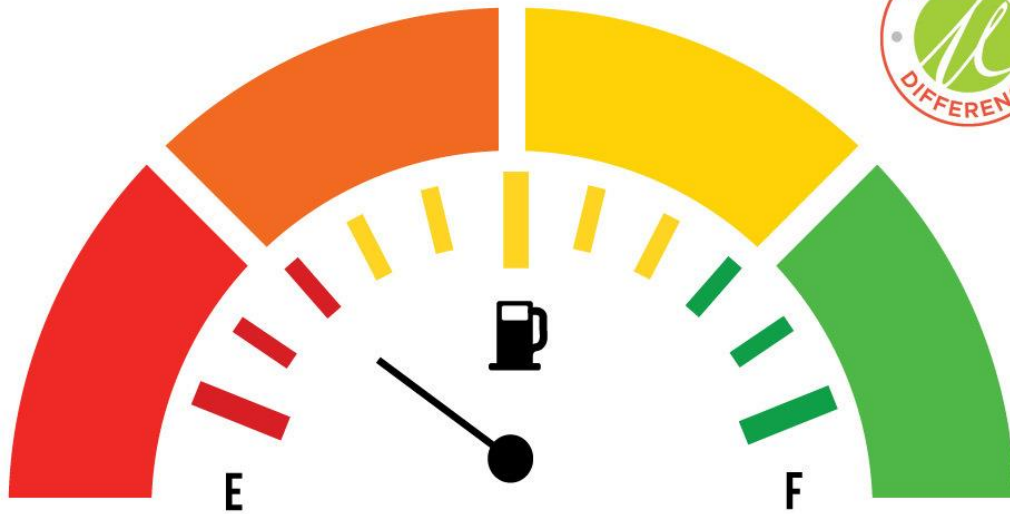


Grow Your Money

Check out our new CD rates by [clicking here!](#)

CREDIT SCORE IN THE RED?

We have loan options
regardless of your credit score!



Ask to speak with a loan officer or apply online.



Take out a **new** (or refinance your **existing**)

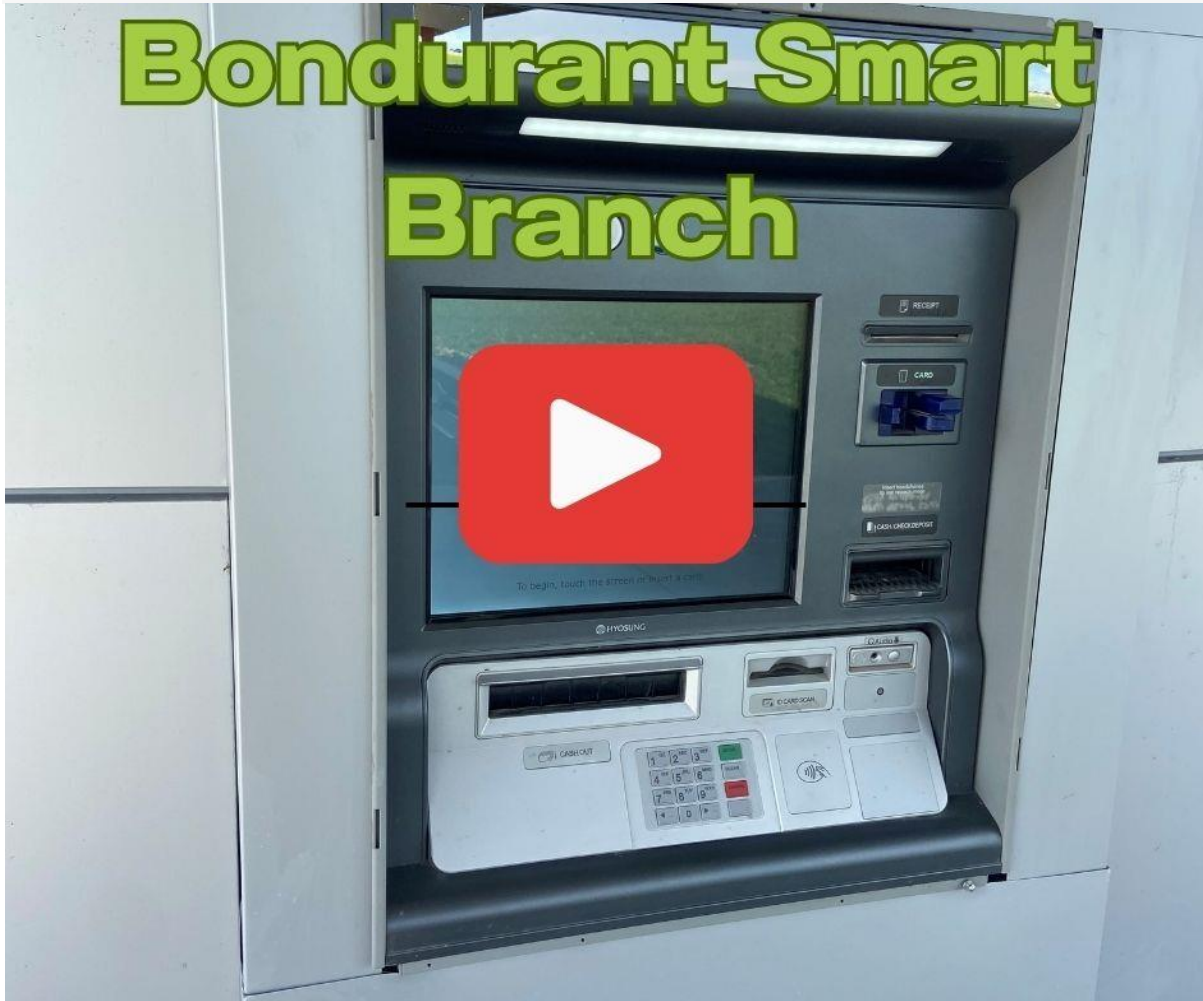
auto loan from another lender

regardless of your credit score.

You deserve it!

APPLY NOW

*New money on Auto loans only. Rates, terms, and conditions subject to change and may vary based on creditworthiness, debt ratio, age and mileage of vehicle. All loans subject to approval. See credit union for full details. Federally insured by NCUA, Equal Housing Opportunity.



The Bondurant Smart Branch features an Interactive Teller Machine (ITM) and on-site loan services for all Midland member-owners. This cutting-edge style of credit union banking allows us to serve Bondurant and the surrounding communities and maintain the exceptional level of service we call the “Midland Difference.” Be sure to watch the short video to learn more about the ITM.

JULY 1 - SEPT 30

DARE TO EXPLORE

— REWARDS —

Use your debit card and escape to the great outdoors.

SHAZAM

Each time you use your debit card to make purchases between

July 1 – Sept. 30, 2023

you'll automatically be entered for a chance to win!

Don't have a debit card? Apply today!

Each time you use your Midland Debit Card for a PIN or signature-based purchase through September 30, 2023, you'll automatically be entered for a chance to win great prizes!

Grand Prize: \$500 SHAZAM gift card

8 Monthly Winners: \$50 SHAZAM gift card

If you need a Midland Debit Card, please send us a message, give us a call, or stop in.

*No purchase is necessary to enter to win. A purchase will not increase your chances of winning. Void where prohibited. The promotion period is between July 1, 2023 through September 30, 2023. Visit <https://www.shazam.net/services/marketing/sdr-rules> for official rules and complete contest details. All rights reserved.

I didn't
KNOW
MIDLAND

**offers products to help
protect my loan.**

Visit with a loan officer to learn how you can protect your family from the unexpected with these loan protection products:

- Life Protection
- Disability/Unemployment Debt Protection
- Guaranteed Asset Protection
- Mechanical Breakdown Coverage

You'll love the Midland Difference!



Did you know Midland offers products to protect your loan?

We offer life, debt, asset, and mechanical breakdown protections! Contact a loan officer by calling **515-645-9334!**



CREDIT CARD Program

coming in October!

- ✓ MasterCard Rewards
- ✓ MasterCard Rate Savvy



NEED A CREDIT CARD?
Ask us for details!



New credit cards coming in October!

Need a credit card? Call us at 515-278-1994 or [click here to apply.](#)

WELCOME HOME
LOOKING FOR YOUR DREAM HOME?

HO
ME

CONTACT US TODAY



Let us help find the right mortgage for you!

We offer

CONVENTIONAL - FHA - VA - USDA - JUMBO

Looking to buy a home? We've got the mortgage for you!

Call us at **515-867-2728!**

RE-MEMBER

why you joined.



**Invite your friends
and family to join
your credit union!**

Remember why you joined Midland Credit Union!

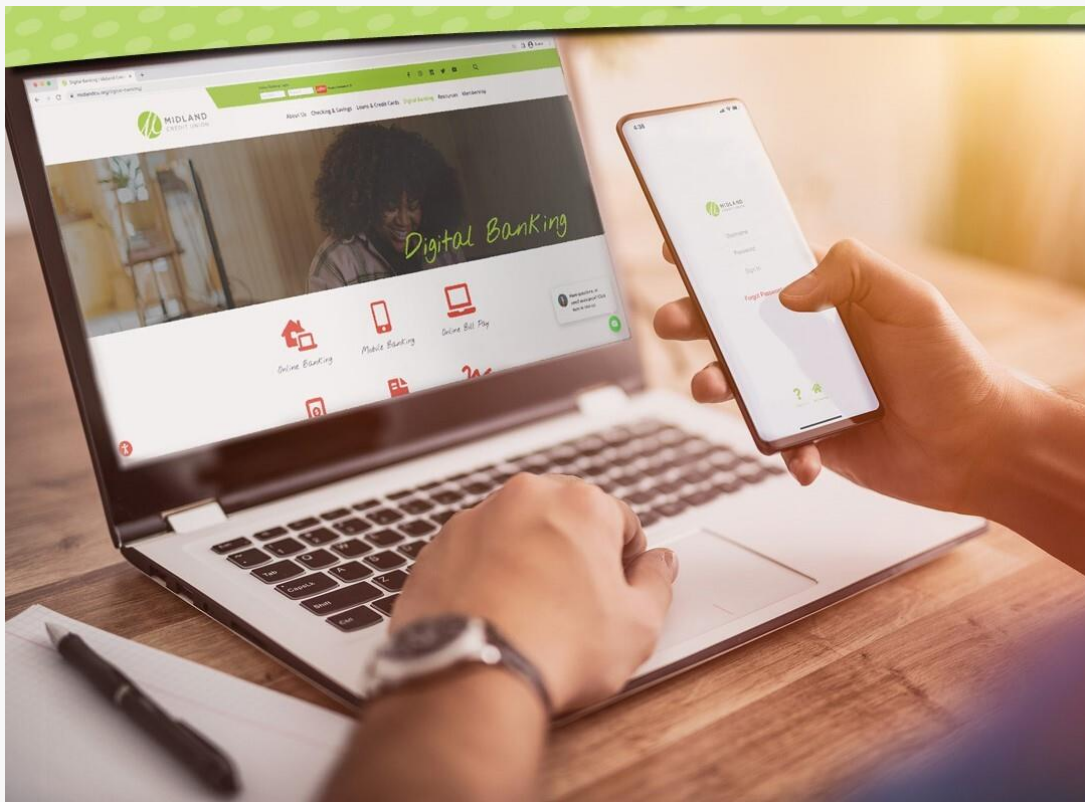
Share your reasons for joining and sticking with us, with your family and friends! Invite them to join us too!

Want to share your story with us? [Click here.](#)



"We became member-owners of Midland Credit Union in 2001, and stay because the staff is always available to help, always friendly, and we love all the convenient services, especially online banking. We refinanced our mortgage loan with Midland and saved almost 2%. We recommend Midland Credit Union to our friends and family. We also opened accounts for our daughters at Midland because we want them to have the same awesome banking experience that we have enjoyed over the years."

- Jeff and Darby B. — Member-Owners since 2001



All Midland Credit Union locations will be **closed**
for the following upcoming holidays:

Closed **Monday, October 9th** in observance of **Columbus Day**.

**Remember: with DIGITAL BANKING,
we're never really closed!**

Checking & Savings | Loans & Credit Cards | Digital Banking

Resources | Membership | Apply Online | About Us

Urbandale Branch - 2891 106th St., Urbandale

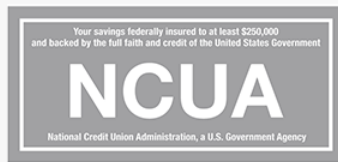
Pleasant Hill Branch - 1225 Copper Creek Dr. Suite M, Pleasant Hill

Bondurant Smart Branch - 3007 Oxbow Court SW, Bondurant

Main: 515-278-1994 Loan: 515-645-9334

www.MidlandCU.org





*2891 106th Street
Urbandale, IA 50322*