



NEWS & UPDATES

August 2023 e-Lert



Midland Credit Union is
Invested in *Your Hometown*
& proudly serving hometowns in the 24 counties!

Welcome NGPL Employees Credit Union!

Midland Credit Union is pleased to announce that we have expanded our field of membership through a merger with NGPL Employees Credit Union. We want to welcome all NGPL member-owners to the Midland Credit Union family! Midland Credit Union now serves 24 counties in Iowa. If you have family or friends who live or work in one of these 24

counties, we encourage you to invite them to join the MCU family. Due to the merger, NGPL Employees Credit Union members and their families living or working outside these 24 counties are ALSO ELIGIBLE to become part of the Midland Credit Union family.

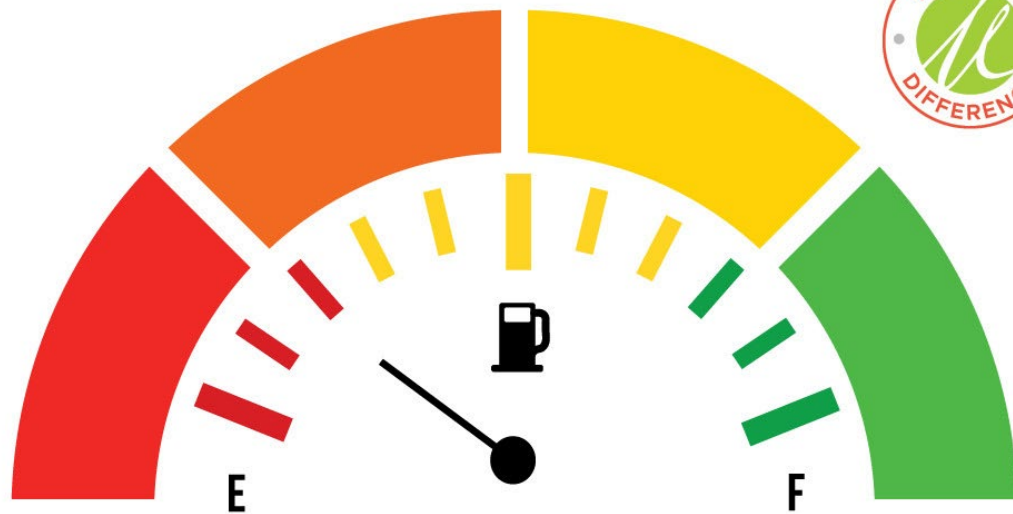


Grow Your Money

Check out our new CD rates by [clicking here!](#)

CREDIT SCORE IN THE RED?

We have loan options
regardless of your credit score!



Ask to speak with a loan officer or apply online.



Take out a **new** (or refinance your **existing**)

auto loan from another lender

regardless of your credit score.

You deserve it!

APPLY NOW

*New money on Auto loans only. Rates, terms, and conditions subject to change and may vary based on creditworthiness, debt ratio, age and mileage of vehicle. All loans subject to approval. See credit union for full details. Federally insured by NCUA, Equal Housing Opportunity.

Learn more about Bondurant's



new Interactive Teller Machine!

JULY 1 - SEPT 30

DARE TO EXPLORE

—REWARDS—

Use your debit card and escape to the great outdoors.

SHAZAM

Each time you use your debit card to make purchases between

July 1 – Sept. 30, 2023

you'll automatically be entered for a chance to win!

Don't have a debit card? Apply today!

Each time you use your Midland Debit Card for a PIN or signature-based purchase through September 30, 2023, you'll automatically be entered for a chance to win great prizes!

Grand Prize: \$500 SHAZAM gift card

8 Monthly Winners: \$50 SHAZAM gift card

If you need a Midland Debit Card, please send us a message, give us a call, or stop in.

*No purchase is necessary to enter to win. A purchase will not increase your chances of winning. Void where prohibited. The promotion period is between July 1, 2023 through September 30, 2023. Visit <https://www.shazam.net/services/marketing/sdr-rules> for official rules and complete contest details. All rights reserved.



I didn't
KNOW
MIDLAND

offers a **NO** fee and **NO** minimum balance checking account with a debit card!

Ask us about opening a **NO** fee and **NO** minimum balance checking account with a debit card today!

You'll love the Midland Difference!



MIDLAND
CREDIT UNION
1933 - 2023

A woman with long dark hair, wearing a white t-shirt and blue jeans, is shown in a thoughtful pose with her hand on her chin. The background behind her is a green circle with white lines.

Did you know we offer checking accounts and debit cards with NO fees and NO minimum balance?

Ready to open a checking account with us? Give us a call at **515-278-1994!**



CREDIT CARD Program *coming* in October!

- ✓ MasterCard Rewards
- ✓ MasterCard Rate Savvy



NEED A CREDIT CARD?
Ask us for details!



New credit cards coming in October!

Need a credit card? Call us at 515-278-1994 or **[click here to apply.](#)**

RE-MEMBER

why you joined.



**Invite your friends
and family to join
your credit union!**

Remember why you joined Midland Credit Union!

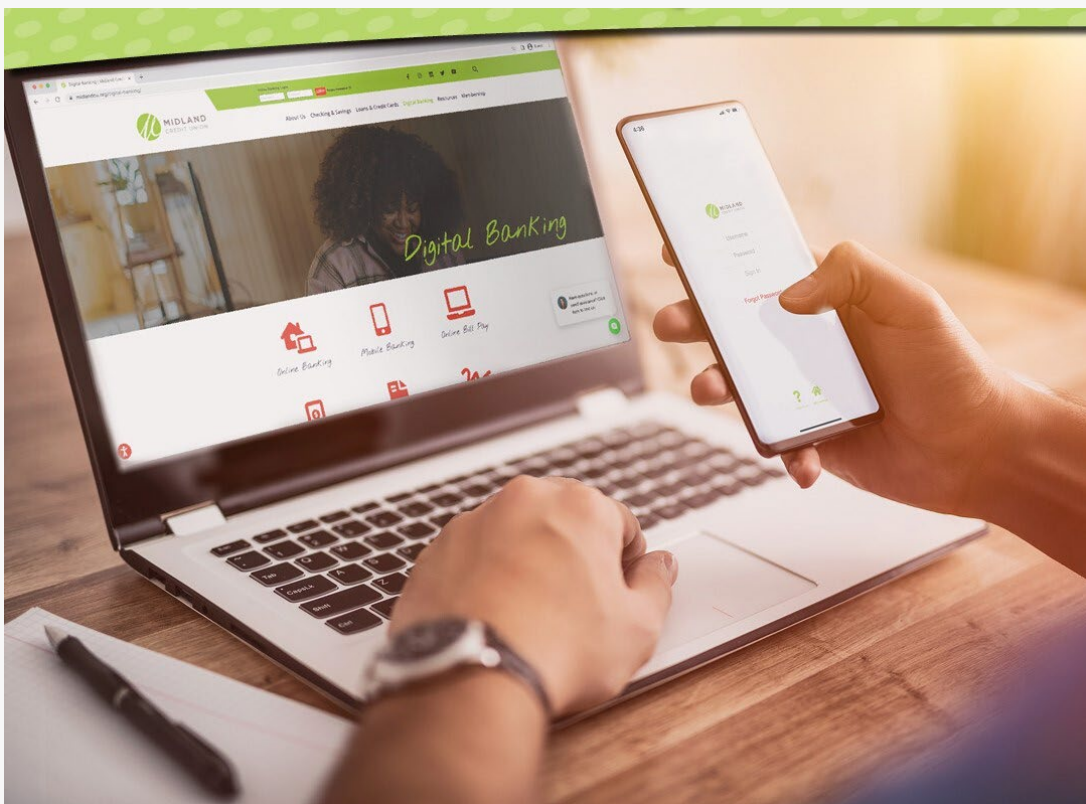
Share your reasons for joining and sticking with us, with your family and friends! Invite them to join us too!

Want to share your story with us? [Click here.](#)



"By refinancing our vehicles we have saved money. We chose Midland CU because it reminds us of small town banking. Also, by signing up for the credit union credit card, we were able to save money on balance transfers, for a total savings of \$1,546."

- Lisa and Travis M. — Member-Owners since 2019



All Midland Credit Union locations will be **closed**

for the following upcoming holidays:

Closed **Monday, September 4** in observance of **Labor Day**.

**Remember: with DIGITAL BANKING,
we're never really closed!**

Checking & Savings | Loans & Credit Cards | Digital Banking

Resources | Membership | Apply Online | About Us

Urbandale Branch - 2891 106th St., Urbandale

Pleasant Hill Branch - 1225 Copper Creek Dr. Suite M, Pleasant Hill

Bondurant Branch - 3007 Oxbow Court SW, Bondurant

Main: 515-278-1994 Loan: 515-645-9334

www.MidlandCU.org





*2891 106th Street
Urbandale, IA 50322*